

**MAKING SENSE
OF AUTISM**



**GOOD AUTISM
PRACTICE**



**EXTENDING
GOOD AUTISM
PRACTICE**



**COMPLEX
NEEDS AND
PARTICIPATION**



**PROGRESSION
FRAMEWORK**



**LEADING
GOOD AUTISM
PRACTICE**

A MODULAR TRAINING PROGRAMME FOR PROFESSIONALS IN EDUCATION

Training is delivered via a network of specialist training hubs across the UK.
The programme materials were developed in consultation with a range of partners.

www.aetraininghubs.org.uk/schools

SUPPORTED BY:



DEVELOPED BY:

genium



UNIVERSITY OF
BIRMINGHAM



A MODULAR TRAINING PROGRAMME FOR PROFESSIONALS IN EDUCATION

Autism affects around 1 in 100 children and adults. All professionals working in education settings should be prepared to support pupils on the autism spectrum – and all staff should have a basic awareness of autism and the needs of individual pupils.

This programme, supported by the Department for Education, offers nationally delivered face-to-face training for professionals working across all education settings for school-aged pupils aged 5 – 16 years through the training hubs listed overleaf.

The AET schools programme will form an essential part of your Continuing Professional Development.



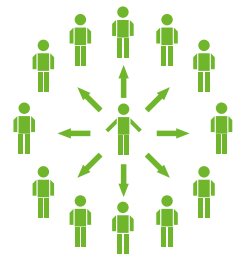
The training uses a range of teaching tools including video, case studies, problem-solving scenarios, presentations and practical resources and activities.

MAKING SENSE OF AUTISM **RAISING AWARENESS**

Basic autism awareness training for all staff within school-age education setting, mainstream and specialist services. This includes teachers, teaching assistants, transport staff, lunchtime staff, senior management, governors and service staff such as administrators.

It will support participants to:

- Identify the four key areas of difference that need to be taken into account
- Know the importance of understanding the individual pupil and their profile of strengths and areas for development
- Identify the key areas to help pupils on the autism spectrum build positive relationships with staff, peers, families and people in their community
- Develop an awareness of the sensory and communication differences that pupils may experience



90
minutes

PROGRESSION **FRAMEWORK**

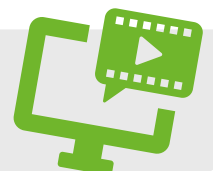
This training provides an overview of the autism progression framework which is available FREE from the AET website. Participants will develop:

- Understanding of how the progression framework relates to the broader educational context
- Familiarity with the content and key features of the progression framework
- Skills in identifying learning goals and measuring progress for pupils on the autism spectrum in areas specific to their individual needs

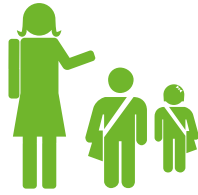
Suitable for practitioners working with school-age pupils on the autism spectrum in both mainstream and specialist services. It could also be delivered as an extended twilight session.



1/2
day



GOOD AUTISM PRACTICE



Practical knowledge, hands-on tools and techniques for all practitioners working directly with school-age pupils on the autism spectrum, in both mainstream and specialist services, to develop their practice.

The training will:

- Enable practitioners to develop their knowledge and understanding of good autism practice
- Provide guidelines and activities to support practitioners to reflect on and improve their own practice

With optional certification.



1
day

EXTENDING GOOD AUTISM PRACTICE



Deepening delegates' understanding, including theories of autism through 'good autism practice'. Advancing skills in developing and applying strategies to facilitate progress and achievement, for teachers, teaching assistants and SENDCos working with school-age pupils on the autism spectrum in mainstream services.

The training will:

- Enable practitioners to explore theories of autism and consider the implications for practice.
- Provide practical strategies to support practitioners as they develop their knowledge, skills and understanding of effective autism practice.
- Enable practitioners to reflect on their practice and share their enhanced knowledge more widely across their organisation

Practitioners who work with pupils with complex needs should undertake the one day complex needs module.

1/2
day

COMPLEX NEEDS AND PARTICIPATION



This one day session focuses on training for staff in specialist settings who support school-age pupils on the autism spectrum who have complex needs. It aims to deepen participants' understanding of autism in ways in which they can support pupil participation, including development of their personal and EHC Plans.

The training will:

- Enable practitioners to extend their understanding of autism in relation to pupils with complex needs
- Provide practical strategies to support practitioners as they develop their knowledge, skills and understanding of effective autism practice
- Enable practitioners to reflect on and evaluate their own practice in relation to EHC planning for pupils with complex needs.

This session covers similar ground to the 'extending and enhancing good autism practice' module but focusses on practitioners working with pupils with complex needs in specialist settings.

1
day

LEADING GOOD AUTISM PRACTICE



For staff who may train or lead other staff in their setting, taking a leadership role that includes responsibility for developing provision for school-age pupils on the autism spectrum within a mainstream and specialist setting.

The training will:

- Enhance delegate's knowledge and understanding of good autism practice
- Help delegates to question, evaluate and develop autism practice within their setting
- Provide delegates with the tools to audit staff skills and identify training needs
- Develop skills and knowledge so that delegates can support their organisation to meet/exceed the requirements of external reviewers such as Ofsted and be compliant with legislative requirements.

This session brings lead practitioners from a range of organisations together to discuss, share and develop practice and understanding.

With optional certification.

1
day

FREE online resources linked to the training

schools autism standards

A set of standards from the AET, to enable schools to evaluate their practice in addressing the needs of children on the autism spectrum.

schools autism competency framework

A competency framework for people working with children from 5 to 16 years of age on the autism spectrum.

schools autism progression framework

The AET schools autism progression framework is a comprehensive interactive assessment tool for pupils on the autism spectrum.

www.aetraininghubs.org.uk/schools

Contact your local training hub now

NORTH WEST

Oldham Local Authority
aetraining@oldham.gov.uk
T: 0161 770 3110 www.oldham.gov.uk



EAST MIDLANDS

Leicestershire County Council
AOStraining@leics.gov.uk
T: 0116 305 9400 www.leics.gov.uk



WEST MIDLANDS

Birmingham City Council -
Communication/Autism Team (CAT)
birminghamaethubtraining@birmingham.gov.uk
T: 0121 303 1792
accessstoeducation.birmingham.gov.uk



SOUTH WEST

Fosse Way School
office@fossewayschool.com
T: 01761 412 198
www.fossewayschool.com

FOSSÉ WAY SCHOOL

SOUTH EAST

The National Autistic Society &
SEND Teaching School
training@nas.org.uk
T: 0141 285 7117 www.autism.org.uk



NORTH EAST

Beaumont Hill Academy
aetadmin@beaumonthilltraining.org.uk
T: 01325 248136
www.educationvillage.org.uk



YORKSHIRE AND HUMBERSIDE

The Stars Team & Leeds City Council
stars@nwsilc.org
T: 0113 336 8288 www.leeds.gov.uk



EAST

Cambridgeshire County Council
autism.training@cambridgeshire.gov.uk
T: 01223 714685 www.cambridgeshire.gov.uk



LONDON

Ambitious about Autism
training@ambitiousaboutautism.org.uk
T: 020 8815 5166 www.ambitiousaboutautism.org.uk



The Bridge London
training@thebridge.islington.sch.uk
T: 0207 619 1000 www.thebridgelondon.co.uk



GUERNSEY

States of Guernsey
casservices@lerondin.sch.gg
T: 01481 268314 www.education.gg

